



January 2021

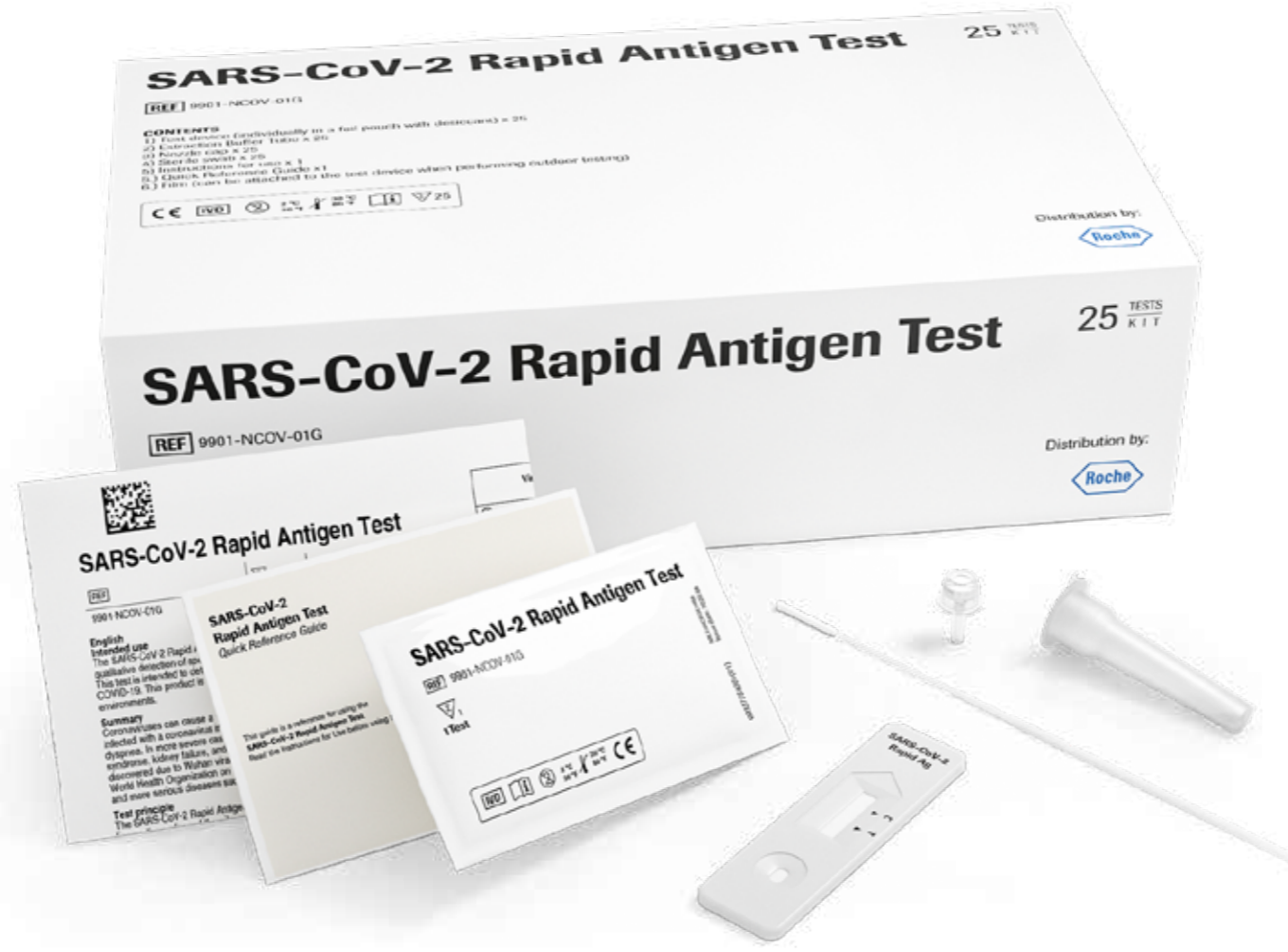
# Launch of Roche SARS-CoV-2 Rapid Antigen Test, which allows fast triage decisions at point of care

*Another way Roche is responding to the COVID-19 pandemic*

Dear valued customer,

Roche is deeply committed to supporting the global response to the COVID-19 pandemic. We understand the importance of availability and fast access to reliable, high-quality tests, which are essential for healthcare systems and patients alike.

Roche is very pleased to announce the launch of the new SARS-CoV-2 Rapid Antigen Test.



- The Roche SARS-CoV-2 Rapid Antigen Test is a reliable, rapid chromatographic immunoassay for the qualitative detection of specific antigens of SARS-CoV-2 present in the human nasopharynx.
- This test is able to detect specific antigens from the SARS-CoV-2 virus in individuals suspected of COVID-19 in 15 minutes with a specificity of 99.68% and a sensitivity of 96.52%<sup>1</sup>.
- Small, instrument-free testing kit enables convenient use for healthcare professionals at different point of care locations, or in resource-limited settings.

*\* Evaluation was carried out in study centers in India and Brazil.*

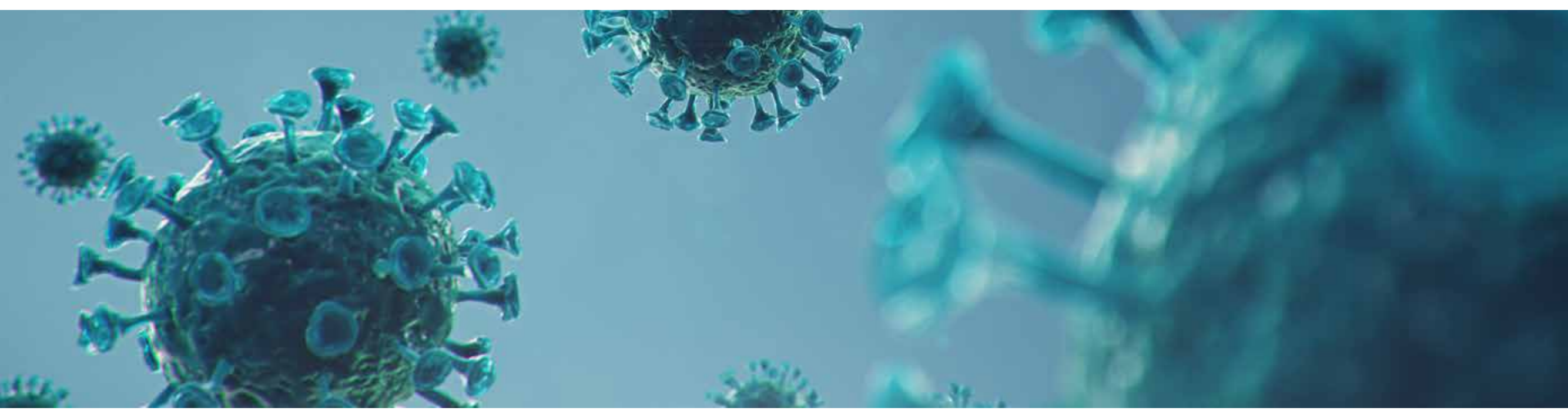
GTIN Number	NAPPI code	Material Number	Material Description
08809319397700	07011571001	9327592190	SARS-CoV-2 Rapid antigen

Price	Pack size
R2,320.42 excl. VAT R2,668.48 incl. VAT	Pack Size: 25 kits Length: 270mm Height: 74mm Volume: 0.003m3 Width: 150mm Nett weight: 0.38kg

Rennie Naidoo  
Marketing Lead - CPS

Mamello Moahloli  
Product Manager -  
Specialty Testing Solutions

*It's time to expand testing – because patients and their communities need to know.*



**References:**

1. SARS-CoV-2 Rapid antigen method sheet

**Note: Roche Diagnostics (Pty) Ltd reserves the right, at its discretion, to change the prices listed, at any time, without further notice.**